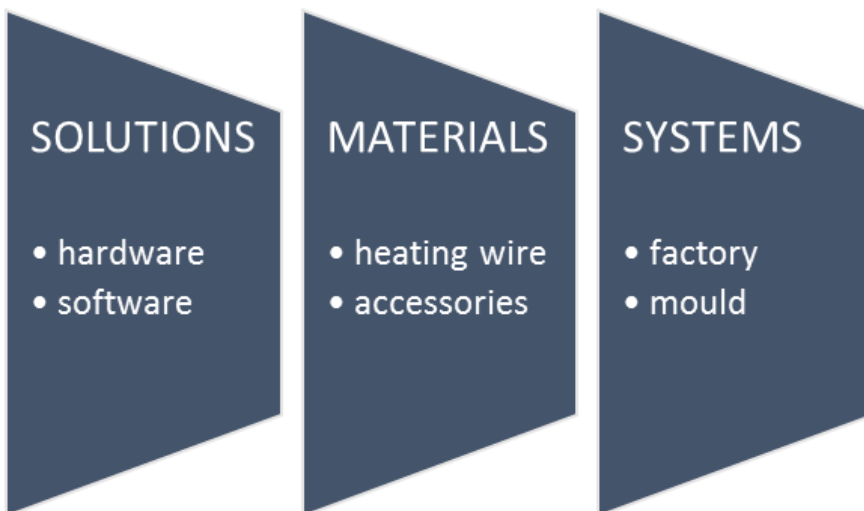


MOULD HEATING FOR ROTOR BLADES



Turn-key scope

...from engineering to commissioning...



Process control is the key for operational excellence. Huikeshoven builds modular systems which are customized for every application and operable from a HMI touchpanel. We can integrate our system with existing systems. To increase the usability, we can set up the same functionalities and make it visual comparable with the existing system.

For temperature measuring, we use separate controlling and limiting sensors for every field. Clixions are no longer necessary but can be integrated as an extra security limiter. In addition to the temperature, we also measuring the actual current. All these data will be viewed in graphs and can be logged on an optional SCADA-system. We can also integrate this with an existing SCADA-system. The system can be viewed via remote access control.

Huikeshoven is a pioneer of the techniques which are used nowadays to heat up moulds for the production of rotor blades. The combination of these techniques and smart control systems have shown their efficiency and reliability over the years.

Direct heating process

Mould heating with electrical heating cable is a direct heating process with a minimum of lost and a maximum process control. The combination with a PID controlled system, will give you a reliable and accurate process. This will increase the productivity and quality standard. The equal heat distribution will result in a manageable curing process and exotherm, without high fluctuating temperatures.

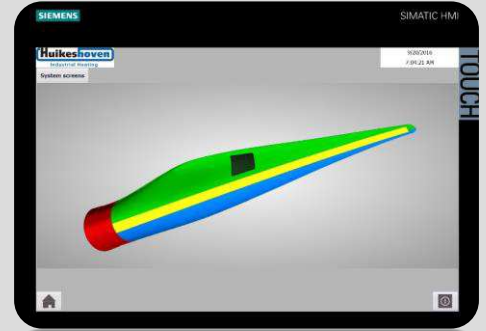
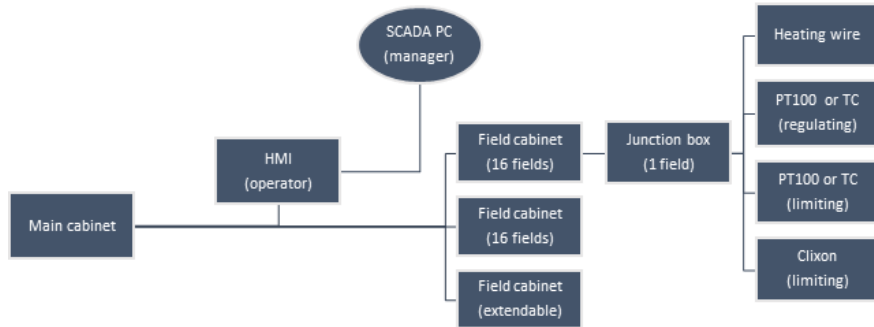
Development

Huikeshoven is continuously working on new developments to improve lead time and reduce energy consumption in the production of rotor blades. The latest developments in mould heating are focused on more equal heating and power distribution. The modular structure of the system will reduce your installation costs and is easily extendable.

MOULD HEATING – system

...full process control from one HMI...

- Complete mould overview
- Modular extendable
- User friendly interface
- Adjustable field groups and tolerances
- Production data for logging
- Double safety for overheating



SCADA – system

...controls the complete factory...

- Mould heating systems
- Hinge systems
- Actual failures
- Logging of production data
- Factory overview
- Process standardization

