

# Solutions for Mouldheating



## Electrical Heating – *an accurate process*

Electrical heating for moulds has a lot of advantages. The combination with a PID controlled system, will give you a reliable and accurate process. This will increase your productivity and give you a higher quality standard. By a better detection of the exotherm, you will have less process influence. Burn out of heating cables is not possible with reliable limiters.

## Huikeshoven – *your total supplier*



Huikeshoven is one of the pioneers of the techniques which are used today for mouldheating for rotorblades.

These techniques have shown their efficiency and reliability over the years, together with the right control system. This can be used for heating of other moulds in the composite industry as well, for example yachts.

## Development

Huikeshoven has a continuous development of new techniques, to improve lead time and energy consumption.

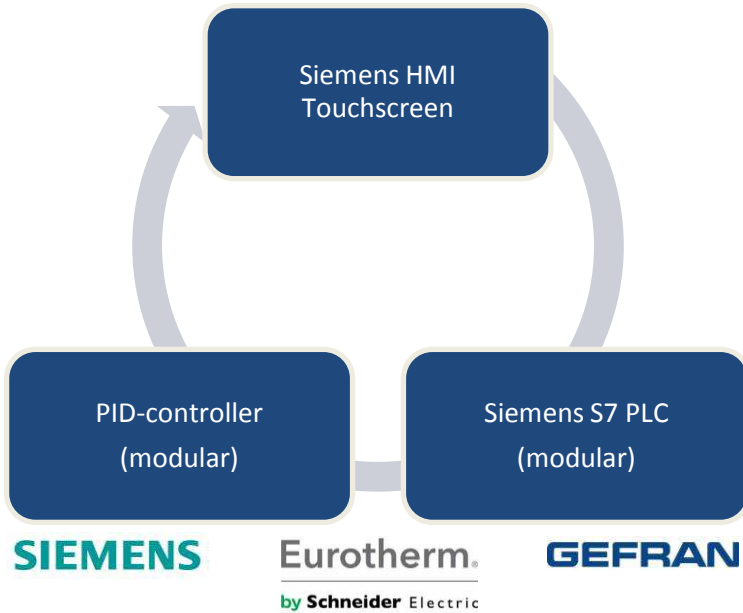
The latest developments in mouldheating are focussed on a more equal heat distribution. The heating can be installed more close to the surface.

Improvement of the installation on the mould, by making it easier and quicker, is also an important item.

## Controlsystem – quality makes the difference

Your controlsystem is the key for operational excellence. Huikeshoven has a modular system which is customized for every application. We can integrate our system with your existing system. To high up the user friendly, we can set up the same functionalities and make it optical comparable as the existing system.

For temperature measuring, we use separate thermocouples (type K or J) or PT100 sensors for controlling and limiting every field. Clixons are no longer necessary. In addition to the temperature, we also measuring the actual current. All these data will be viewed in graphs and can be logged on a SCADA-system. We can also integrate this with an existing SCADA-system. The system can be viewed via remote access control.

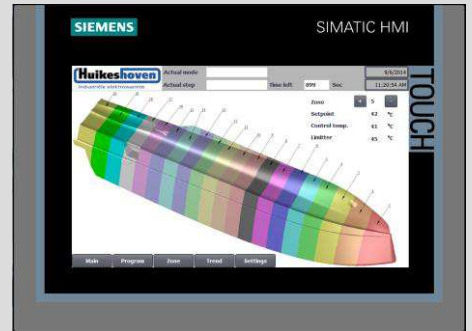


### Engineering

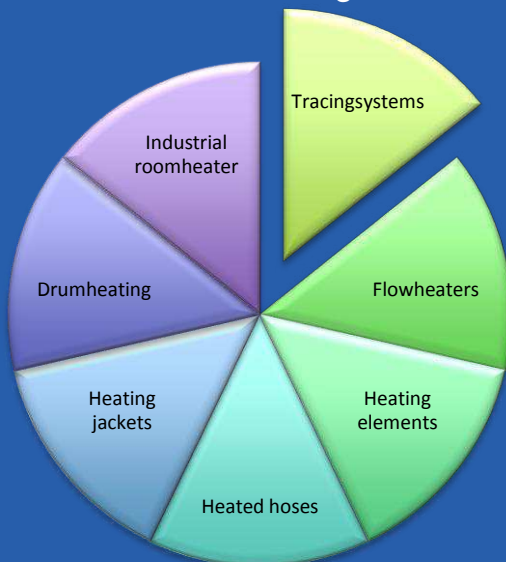
Huikeshoven appreciates to be involved in an early stadium of the project. We can give you full project support, which improves the turnaround time during your project.

### Installation and commissioning

The installation, commissioning and integration of the mouldheating system is decisive in the total project. Huikeshoven will take care for commissioning of the complete system and the integration in your process.



## Productrange



## Benefits

